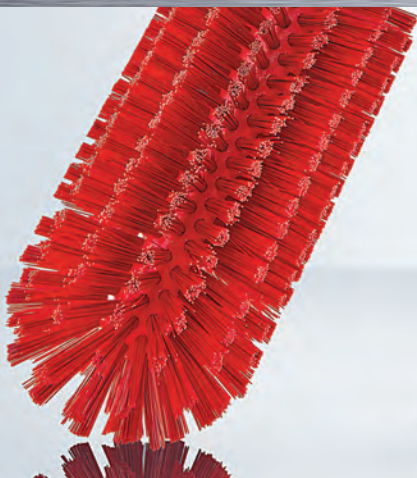


Micronova[®]

Innovative Solutions for Your Critical Cleaning

Since 1984

**BRUSHES: ROUGH AND DETAIL
CLEANING SOLUTIONS**



Micronova has a range of brushes for a variety of applications from aggressive to softer cleaning of process equipment in pharmaceutical, food and cannabis preparation. Brushes designed to clean bottles, drums, tanks, tubes and floor drains are available with nylon, polyester, or polypropylene bristles made from FDA approved resins. Brush covers are available for sanitizing and fine cleaning.



Part No.	Brush Type	Brush Diameter		Brush Length		Overall Length		Bristle Stiffness	Bristle Material	Type of Tip	Bristle Color	Handle/Included Part of Brush	Use with STA/STAEH Series Handles	Core Material
		IN	CM	IN	CM	IN	CM							
Plastic Tube Brushes														
BRPL-118	Flexible Polypropylene Core Tube Brush	1	2.5	4	10.1	18	45.7	Medium	Polypropylene	Flat	White	•		Polypropylene
BRPL-1218		0.5	1.2	4	10.1	18	45.7	Stiff	Polypropylene	Flat	White	•		
BRPL-1418		0.25	0.6	4	10.1	18	45.7	Medium	Polypropylene	Flat	White	•		
BRPL-25S36		2	5	5	12.7	36	91.4	Medium	Polypropylene	Flat	White	•		
BRPL-3418		0.75	1.9	4	10.1	18	45.7	Medium	Polypropylene	Flat	White	•		
BRPL-32548		0.25	0.6	5	12.7	48	121.9	Medium	Polypropylene	Flat	White	Loop		
Stainless Steel Wire Brushes														
BRWL-149	Braided Wire Brush	0.25	0.6	5	12.7	16	40.6	Light	Nylon	Fan Tip	White	Loop		Stainless Steel
BRWL-349		0.75	1.9	9	22.8	20	50.8	Light	Nylon	Fan Tip	White	Loop		
BRWM-125		0.5	1.2	5	12.7	16	40.6	Medium	Nylon	Fan Tip	White	Loop		
BRWM-12572		0.5	1.2	5	12.7	72	188	Medium	Nylon	Polished Tip	White	Loop		
BRWM-1572		1	2.5	5	12.7	72	188	Medium	Nylon	Polished Tip	White	Loop		
BRWM-16BR		1	2.5	6	15.2	36	91.4	Medium	Nylon	Fan Tip	White	Plastic Loop		
BRWM-22		2	5	2	5	16	40.6	Medium	Nylon	Fan Tip	White	Loop		
BRWM-345		0.75	0.9	5	12.7	16	40.6	Medium	Nylon	Fan Tip	White	Loop		
BRWL-14349	Tapered Brush Head	0.25 to 0.75	0.6 to 1.9	9	22.8	20	50.8	Light	Nylon	Fan Tip	White	Loop		
BRWL-1434936		0.25 to 0.75	0.6 to 1.9	9	22.8	36	91.4	Light	Nylon	Fan Tip	White	Loop		
BRWM-341512		0.75 to 1.5	1.9 to 3.8	12	30.4	28	71.1	Medium	Nylon	Fan Tip	White	Loop		
FlexBrush™														
BRWM-22512J	J Hook	2.2	5.7	12	30.4	16	40.6	Medium	Nylon	Tufted Tip	White	•	•	Stainless Steel
BRWM-22512S	S Shape	2.2	5.7	12	30.4	21	53.3	Medium	Nylon	Tufted Tip	White	•	•	Stainless Steel
BRWM-22512	Straight	2.2	5.7	12	30.4	16	40.6	Medium	Nylon	Tufted Tip	White	•	•	Stainless Steel
FB-12	J Hook	2.2	5.7	12	30.4	11.5	29.2	Med/Stiff	Polyester	Bent Tip	White	•	•	Zinc

Effectively cleans piping interiors, exteriors, and equipment needing short or long reaches.

Plastic Tube Brushes

Plastic Tube Brushes are durable polypropylene brushes with thin cores able to pass through elbow fittings.

Stainless Steel Wire Brushes

These durable Stainless Steel Wire Brushes with nylon bristles are available in a variety of sizes for cleaning parts, tubing and hard to reach areas.

FlexBrush™

FlexBrush™ brushes flex to clean ducting, piping exteriors or vessel interiors. Use with or without cover.

Color-coded brushes are versatile for aggressive or fine equipment cleaning in the lab and in production



Bottle Brushes

Bottle Brushes have rounded soft or medium stiff bristles for small containers and surface cleaning. Valve brushes have larger diameter oval shaped brush heads.

Bottle Brushes

Plastic Brush Heads attach to threaded handles for cleaning small tanks, carboys, duct work, and other equipment. Cylinder brush is dome shaped, Kettle brush is oblong.

Part No.	Brush Type	Brush Diameter		Brush Length		Overall Length		Bristle Stiffness	Bristle Material	Type of Tip	Bristle Color	Handle/Included Part of Brush	Use with STA/STAEH Series Handles	Core Materials
		IN	CM	IN	CM	IN	CM							
Bottle Brushes														
BRWH-66	Bottle	2.5	6.3	4.5	11.4	12	30.4	Soft	Polyester	Round Head	White	•	Polypropylene	
BRWH-67		3	7.6	7	17.7	16	40.6	Soft	Polyester	Round Head	White	•		
BRDB-01		3.2	8.2	6.5	16.5	16	40.6	Soft	Polyester	Round Head	Blue	•		
BRDG-01		3.2	8.2	6.5	16.5	16	40.6	Soft	Polyester	Round Head	Green	•		
BRRE-01		3.2	8.2	6.5	16.5	16	40.6	Soft	Polyester	Round Head	Red	•		
BRWH-01		3.2	8.2	6.5	16.5	16	40.6	Soft	Polyester	Round Head	White	•		
BRYE-01		3.2	8.2	6.5	16.5	16	40.6	Soft	Polyester	Round Head	Yellow	•		
BRDB-50	Valve	4	10.1	6	15.2	16	40.6	Med/Stiff	Polyester	Round Head	Blue	•		
BRWH-50		4	10.1	6	15.2	16	40.6	Med/Stiff	Polyester	Round Head	White	•		
BRWH-70		4	10.1	6	15.2	30	76.2	Med/Stiff	Polyester	Round Head	White	•		
BRWH-30		5	12.7	6	15.2	30	76.2	Med/Stiff	Polyester	Round Head	White	•		
BRWH-40		5	12.7	6	15.2	16	40.6	Med/Stiff	Polyester	Round Head	White	•		
BRRE-40		5	12.7	6	15.2	16	40.6	Med/Stiff	Polyester	Round Head	Red	•		
BRYE-40		5	12.7	6	15.2	16	40.6	Med/Stiff	Polyester	Round Head	Yellow	•		

Plastic Brush Heads

BRWH-02	Cylinder	7	17.7	4.7	12	–	–	–	Polyester	Round Head	White	•	Polypropylene
BRWH-03	Cylinder	5	12.7	4	10.1	–	–	–	Polyester	Round Head	White	•	
BRWH-41	Kettle	7	17.7	5.5	13.9	–	–	–	Polyester	Flare Head	White	•	
BRDB-41		7	17.7	5.5	13.9	–	–	–	Polyester	Flare Head	Blue	•	
BRDG-41		7	17.7	5.5	13.9	–	–	–	Polyester	Flare Head	Green	•	
BRRE-41		7	17.7	5.5	13.9	–	–	–	Polyester	Flare Head	Red	•	
BRWH-42		10	25.4	6	15.2	–	–	–	Polyester	Flare Head	White	•	
BRBL-46	Drain Brush, Reverse Threading	3	7.6	5.5	13.9	–	–	–	Polypropylene	Round Head	Black	BRFHD 36, 48, 60 only	



Plastic Handles

Micronova Plastic Handles in fixed or extended lengths with color coded grips can be used with Flex Brushes and Plastic Brush Heads.

Handle grips available in four colors: Yellow (YE), White (WH), Red (RE), and Blue (DB)



Drain Brush with reverse attachment black brush head.



Common Fixed Length Handles

- STA-48WH 48 in (120 cm) handle, white grip
- STA-60WH 60 in (150 cm) handle, white grip

Common Extension Handle

- STAEH-072WH 40 to 72 in (100 to 180 cm), white grip

Micronova offers a wide range of brush covers for those applications that require a more delicate touch. The different fabrics can be used for applying cleaning solutions (NovaPoly & PolySorb), particle removal (Microfiber) or a slightly abrasive material (PolyMesh) where light scrubbing is required. The cover options create a cleaning surface when bristles alone won't meet the need.



Bottle Brush and NovaPoly Brush Cover
BRWH-01
BRSC6-01



FlexBrush™ and Microfiber Brush Cover
BRWM-22512J
FBC-6AA



Plastic Tube Brush and Brush Cover
BRPL-118
BRSC6-156

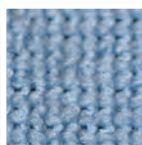
Cleaning Surface Fabrics

Part No.	Use with Brush(es)	Microfiber	NovaPoly™	PolySorb™	PolyMesh™	Urethane Foam Interior	Color
Bottle Brush Covers							
BRSC6-01	BRDB-01, BRDG-01, BRRE-01, BRWH-01, BRYE-01, BRWH-01A		•				White
BRSC68-01				•			White

Part No.	Use with Brush(es)	Microfiber	NovaPoly™	PolySorb™	PolyMesh™	Urethane Foam Interior	Color
FlexBrush™ Covers							
FBC-1111	FB-12, BRWM-22512, BRWM-22512J, BRWM-22512S			•		•	White
FBC-611			•			•	White
FBC-68					•		White
FBC-6AA			•				Blue
FBC6AW-20			•				White

Part No.	Use with Brush(es)	Microfiber	NovaPoly™	PolySorb™	PolyMesh™	Urethane Foam Interior	Color
Plastic Brush Head Covers							
BRSC6-02	BRWH-02		•				White
BRSC68-02					•		White
BRSC11-02				•			White
BRSC6-03	BRWH-03		•				White
BRSC68-03					•		White
BRSC68-0311					•	•	White
BRSC11-03				•			White
BRSC6-41	BRDB-41, BRDG-41, BRRE-41, BRWH-41		•				White
BRSC68-41					•		White
BRSC6AA-41			•				White
BRSC11-41				•			White
BRSC6-42		BRWH-42		•			
BRSC68-42					•		White
BRSCAA-42			•				Blue
BRS11-42				•			White

Part No.	Use with Brush(es)	Microfiber	NovaPoly™	PolySorb™	PolyMesh™	Urethane Foam Interior	Color
Plastic Tube and Stainless Steel Brush Covers							
BRSC6-1530	BRWM-16BR		•				White
BRSC6-156	BRPL-118		•				White
BRSC652-6	BRWL-149, BRWM-125, BRWM-12572		•				White



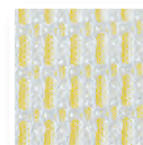
Microfiber
80% Polyester/
20% Polyamide



NovaPoly™
Polyester,
Smooth



PolySorb™
Polyester,
Textured



PolyMesh™
Polyester,
Braided Mesh



Micronova Manufacturing
3431 W. Lomita Boulevard
Torrance, CA 90505-5010 USA

Tel: 310/784-6990
Fax: 310/784-6980

SalesInfo@micronova-mfg.com
www.micronova-mfg.com

